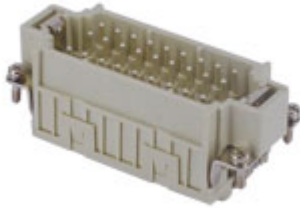


Part number

CDSM 27



Brief description:

male insert, 27 poles + PE, spring terminal connections , 10A 400V, 6kV, 3, silver plated, size "77.27", CLASS insert series

Product description

Model	male insert
Version	spring terminal connections
Series	CDS
Product type	with male contacts
Family	CLASS inserts
Size	size "77.27"
N. of poles	27 poles +

Technical data

Current	10 A (A.C. and D.C.)
Voltage	400 V
Rated impulse withstand voltage	6kV
Pollution degree	3
Wire cross-section	0,14 mm ² - 2,50 mm ²
AWG size	26 - 14
Operating temperature range (min, max)	-50°C ... +70°C
Contact type	silver plated
Mating cycles	≥ 200
IP degree of protection	IP20 without enclosure; IP65/IP66/IP67/IP68 with enclosure
PE wire cross-section	0,14 - 4 mm ² ; AWG 20 - 12

Further technical details

Characteristics according to EN 61984	10A 400V 6kV 3; 10A 400/690V 6kV 2
Insulation resistance	≥ 1 GΩ
Rated voltage according to UL/CSA	600V
UL 94 flammability rating	V-0
Weight	46,00 g

Approvals / Standards

Reference standard	EN 61984 (2001-11)
Quality mark	EAC
Conformity	CQC, CE

General ordering information

EAN13 code	8015747148511
Tariff number	85369095
Country of origin	Made in EU (IT)
ETIM classification	EC000438

Packaging Information

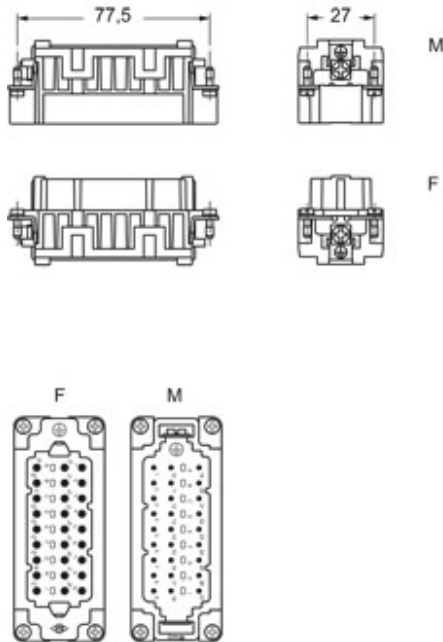
Packaging length	210,00 mm
Packaging height	130,00 mm
Packaging width	240,00 mm
Packaging weight	1,38 kg
Packaging volume	6,55 dm ³
Packaging description	Carton box
Packaging quantity	30 Pcs
Packaging EAN code	8015747152419
Sub-packaging weight	0,23 kg
Sub-packaging description	Carton
Sub-packaging quantity	5 Pcs
Sub-packaging EAN barcode	8015747152426

Part number

CDSM 27



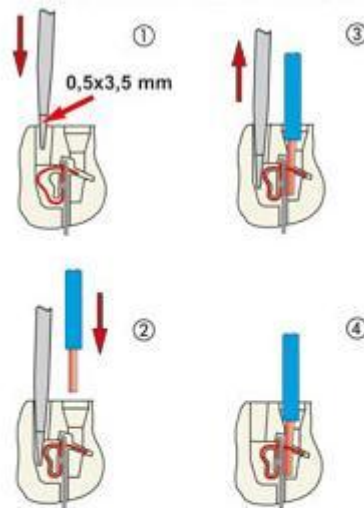
Catalogue drawings



Notes

CDSF/M 27 inserts

- characteristics according to EN 61984:
10A 400V 6kV 3
- insulation resistance: > 10 GOhm
- ambient temperature limit: -40 °C ... +125 °C
- made of self-extinguishing thermoplastic resin UL 94 V0
- mechanical life: > 500 cycles
- contact resistance: < 1 mOhm
- inserts for conductors section:
0.14 - 2.5 mm² - AWG 26 - 14
- for wires with crimped ferrule, usable section:
up to 1.5 mm² (AWG 16)
- conductors stripping length: 9...11 mm
- enclosures: size 77.27:
C-TYPE IP65/IP66
C7 IP67 stainless steel lever
V-TYPE IP65/IP66 stainless steel lever
T-TYPE IP65 insulating
JEI zinc-plated steel lever
BIG hoods
W-TYPE for aggressive environment
EMC
central lever
IP68
LS-TYPE
- panel supports: COB



CR CDS coding pin

Connection with spring terminal

